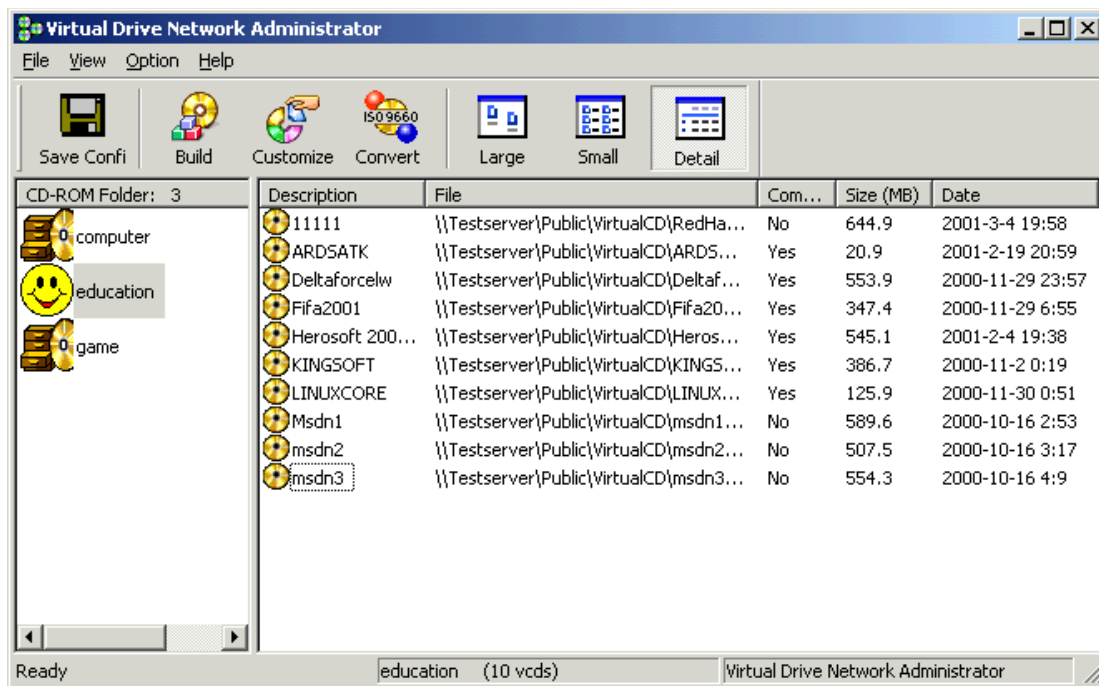


## Virtual Drive Network V6.1 Setup Guide



A.

### B. System Requirements:

- (1) A (or many) Server: Windows NT4.0/NT5.0/2000, Windows 95/98/Me, or Novell.
- (2) Administrator Client: Windows 95/98/Me/2000 with a CD drive installed
- (3) Workstation Clients: Windows 95/98/Me/2000. (No need any CD drive)

### A. Server Setup:

- 0 Create a new shared directory on server. (for example: share name is \\server\vdn)
- 1 Insert VDN CD into CD drive. (for example D:), run:

D:\SerSetup.EXE

Type in your Company Name and Serial Number, and specify the destination directory to \\server\vdn



**Important Note for Peer to Peer Network:**

If you don't have a NT or Novell server(i.e. Peer to peer network). You need to assign one of the workstations as the server. After you completed above. (Step A) Please copy \NoServer\setup.sys (on CD) to \\server\vdn\setup.sys to replace the default one.

## **B. Administrator Setup & System Configuration**

Install the Virtual Drive Network Admin program on a Windows 95/98/Me/2000/ NT workstation. (Note: Do not install it on Novell server). Steps as followings:

- (1) Use Administrator's account to logon the network from Win95/98/Me/2000/NT.
- (2) Run Virtual Drive Admin Setup program (on Win95/98/Me/2000/NT)  
\\server\vdn\setup

Note: To install the VDN admin. You must have the proper access right ("write" privilege) for \\server\vdn

## **C. Workstation Setup: (on Windows 95/98/Me/2000/NT)**

On each workstations run next command

- \\server\vdn\setup

After you have installed Virtual Drive Network. The VDN icon will be displayed on task bar.